



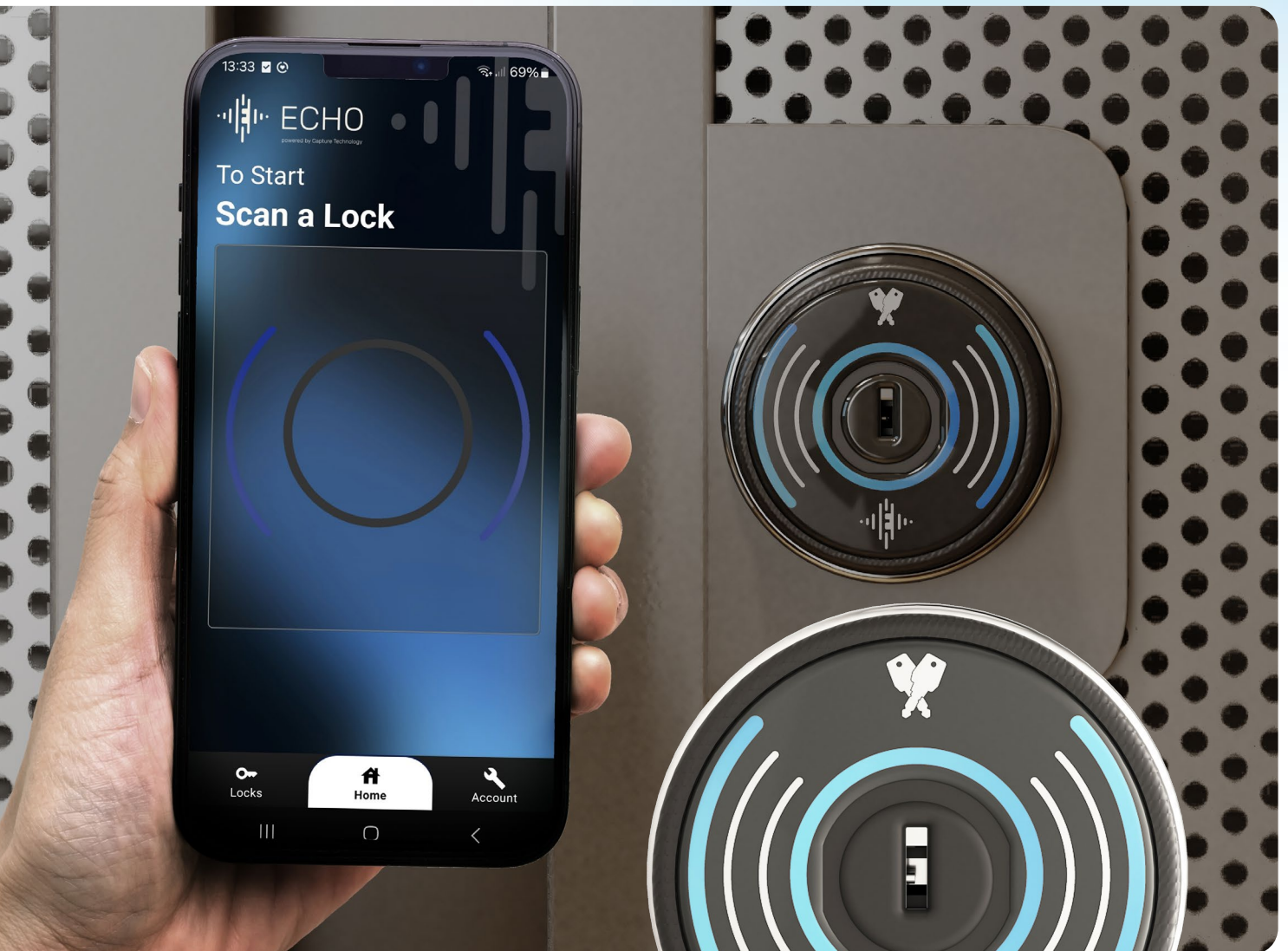
BELTRONICA

ECHO lock is totally
unique, yet you already
hold the key



Overview

Meet ECHO, the first battery-free, NFC-powered locking system



Lock and unlock with just a tap of your smartphone – no keys, no batteries, no maintenance.

The eco-friendly future of lock management is here

A groundbreaking innovation, ECHO uses NFC technology to harvest a tiny amount of energy from your phone to open and close your lock. By eliminating the need for traditional power sources, ECHO delivers an eco-friendly, hassle-free locking experience, reducing energy consumption and any environmental impact.

ECHO is revolutionary, it's evolutionary – and it's also better for the planet.

What makes it unique?



Battery free

ECHO is wire and battery free. It doesn't even need mains power. It uses Near Field Communication (NFC) to harvest the tiny amount of energy it needs to open and close your locker.



Planet friendly

No internal battery means ECHO has a lower carbon footprint. It reduces e-waste, lowers energy consumption and even eliminates battery maintenance, helping to extend the life of your lockers. ECHO is more than an evolution of the locker – it's a real game changer in locker sustainability.



NFC secure

NFC is the same tech you use when you make a contactless payment with your bank card or smartphone. ECHO uses NFC to transfer a secure token from your phone to the lock, giving you secure access to the locker. Once the 'transaction' is complete, the token is deactivated and cannot be reused.



User friendly

All you need is the ECHO app and your phone. No need to grab keys, passcodes or anything else – just a few taps and you're done.



Government-level security

You don't need any codes, keys or an RFID card. ECHO uses Advanced Encryption Standard (AES) to protect your access. That's the same system governments use around the world to ensure the highest levels of encryption for their documents. The security of your locker couldn't be in safer hands.



How it works

ECHO couldn't be easier to use: No keys. No codes. No cards. No problem. All you need is the ECHO app

While 'Capture Technology' harvests a tiny bit of energy from your phone, Near Field Communication (NFC) gets ready to talk to the lock. If you've never heard of NFC before, that's the bit of kit your phone uses when you use Google Wallet or Apple Pay to make super-secure cardless payments at the checkout. Yes, it's that safe to use.

Powered by 'Capture Technology'

ECHO delivers the advantages of a fully networked, connected system – without the wires!

Energy-harvesting NFC technology lets ECHO capture the tiniest amount of energy from your smartphone. In fact, it takes such a small amount of energy to work an ECHO lock that even if your phone only had a 1% charge, it would be way more than enough to open and close an ECHO lock with ease.

So say goodbye to the batteries and the need for regular battery maintenance. No batteries means no need to check and change them, lower maintenance overheads and, of course, no old batteries to dispose of. That's a clear win-win all the way.

Near Field Communication (NFC) – The Technical Bit

NFC is a short-range wireless technology that lets you securely pass data from one device to another. It's the same technology you already use when you make a contactless payment with your smartphone or payment cards. Reassuring, or what?

How ECHO uses NFC

ECHO transfers a secure token from your phone to the lock, granting you instant, secure access.

One-time use, secure transaction

Once the transaction is complete, that token is immediately deactivated and cannot be reused. This ensures super-safe security every time you use an ECHO lock.

Flexible operating modes

Making your locker installation work harder

ECHO gives you the flexibility to use the lock however you want. You can now have a single bank of lockers in your reception area that can be used by visitors or guests (Public Mode), or you can exclusively allocate lockers to staff and employees for their own use (Private Mode). Everything is controlled through the App – you simply decide how you want ECHO to work for you.

What modes are available?

ECHO gives you three operating modes – Public Mode, Private Mode, and Registered Public Mode.



Public Mode

In Public Mode, lockers are 'open' and available for use by anyone.

Users request access to a locker by scanning a QR code displayed at the location, downloading the Echo app and registering. Admin approval is not required to use Public Mode locks, but access and usage can be monitored through the App or Web Portal.



Private Mode

In Private Mode, users are granted exclusive access to lockers by the storage provider.

ECHO app can be used to securely lock and open their assigned locker, while admin can manage access and monitor usage through the App or the Web Portal.



Registered Public Mode

In Registered Public Mode, lockers are 'open' and available for use by anyone who is pre-approved/registered to use them.

Users must download the ECHO app when sent an invite email from a storage provider and must be logged into their account to lock and open any of the lockers within that location. Admin then uses ECHO app to send out email invites to pre-approved locker users and can also monitor lock availability.

Mobile application overview

ECHO app – one app, so many uses!

Whether you're managing the lockers, or simply storing your things while you head for a workout, ECHO app controls it all. iPhone user or Android user, you'll find the ECHO app on your app store.

As the manager or owner of the locks, the ECHO app allows you perform multiple functions including:

- ✔ Effortlessly switch locks between its 3 flexible operating modes
- ✔ Allocate lockers to users / grant user access
- ✔ Send emails to users for account creation
- ✔ Unlock 'blocked' lockers

As a user of the locks, you can use the App to:

- ✔ Lock / unlock your locker
- ✔ Share locker access with another user
- ✔ View name and location of your lock / locker



Want to download the ECHO app?

You'll find it on the Apple Store and Android Store.



Web portal overview

Choose the right plan for your needs

For larger businesses or those that require more control, the ECHO lock can be administered through the Web Portal. The dashboard shows at a glance which locks are in use, in what location and by which user. You can also import user email addresses in bulk.

Available in Web Standard or Web Pro versions, the ECHO web portal gives you greater control and visibility over your locks.

ECHO Web Standard – essential features for smaller locations:

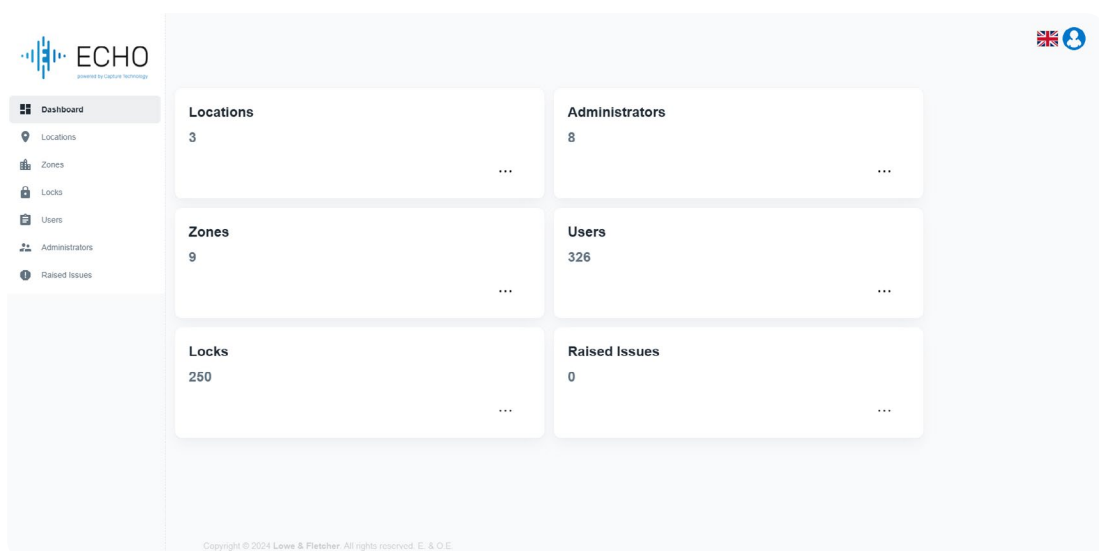
- ✓ Full ownership control
- ✓ Control hub for seamless lock management
- ✓ Effortlessly approve and manage user accounts
- ✓ Import users in bulk

Try the Standard Plan for FREE on a 30-day trial! Just click the button in the App and sign-up today.

ECHO Web Pro – advanced features for full control and flex:

- ✓ Add unlimited admin users
- ✓ Easily transfer ownership
- ✓ Assign multiple locks per user
- ✓ Manage multiple locations
- ✓ Access comprehensive usage reports including audit trails
- ✓ Monitor lock usage

Ready to upgrade? Simply click the button in your app now!



Typical applications

Where can ECHO be used?

ECHO is wire-free and so easy to use, the possibilities of how you could use it are endless. All that's needed is a mobile network connection or WiFi connection. Here are just some of our favourites.



Workspace Storage

Secure personal storage for employees. This can either be used with ECHO in Private Mode, where lockers are assigned to staff, or in Registered Public Mode, where staff can choose their own locker.

Education Facilities

With ECHO in Private Mode, give individual locker access to students and staff.

Asset Management

With ECHO in Private Mode, give controlled access to valuable tools, equipment, or resources.

Sports Clubs and Leisure Centres (dry areas)

With ECHO in Public Mode, any member who has access to storage areas can choose a locker for use.

Transport Hubs (airports, train stations)

General public access to storage lockers.

Tourist Attractions

With ECHO in Registered Public Mode, grant visitor-only access to storage areas.

Private Sports Clubs / Leisure Centres (not wet)

With ECHO in Registered Public Mode, grant members access to secure personal storage, with a choice of locker.

Experience ECHO for yourself. This is simplicity, sustainability and security – redefined.

Try ECHO for real

ECHO lock is so unique, the best way to see how well it works is to try it in person. Book your ECHO demonstration and see why smart locks will never be the same again.



ECHO Lowe & Fletcher

echolock.lowe-and-fletcher.co.uk



ECHO Lowe & Fletcher Inc

echolock.loweandfletcherinc.com



ECHO Euro-Locks

echolock.euro-locks.com

BELTRONICA

Avenida de Somosierra, 22 - Naves E 6 y 7 - P. E. Inbisa I

San Sebastián de los Reyes - ES 28703 - Madrid

Tel / Phone: +34 916 381 331 - comercial@beltronica.es

Lowe & Fletcher Ltd (UK)

E: sales@lowe-and-fletcher.co.uk

T: +44 (0) 121 505 0400

Lowe & Fletcher Inc (USA)

E: sales@loweandfletcherinc.com

T: +1 (616) 994 0490

Euro-Locks SA NV (Belgium)

E: sales@euro-locks.be

T: +32 61 212.261

Euro-Locks SA (France)

E: euro-locks@euro-locks.fr

T: +33 (0)3.87.92.61.11

Euro-Locks Sicherheitseinrichtungen GmbH (Germany)

E: vertrieb@euro-locks.de

T: +49 (0) 6897 9072 0

Euro-Locks Sp. z o. o. (Poland)

E: sekretariat@euro-locks.pl

T: +48 (32) 344-78-70, -82, -84

